

封面

封底

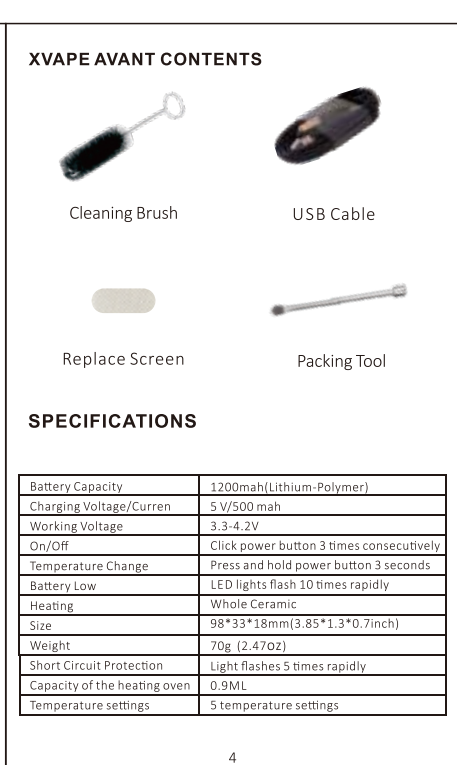


NOTE!
PLEASE DO NOT PUT THIS PRODUCT AWAY OR LEAVE IT FOR EXTENDED PERIODS OF TIME WITH LOW CHARGE BECAUSE IF THE BATTERY FALLS BELOW 2% THEN IT WILL NO LONGER ACCEPT A CHARGE.

DISCLAIMER
 Thanks for purchasing the XVAPE AVANT. To ensure the best experience, please read and understand the instructions fully before your first use of the XVAPE AVANT. We strongly recommend these instructions are kept for future reference.
 We hope you enjoy the quality and performance of your new XVAPE AVANT.
 User must be of legal age within any given jurisdiction to purchase or use the XVAPE AVANT, use this product in moderation. This product should not be used by a child, while driving and/or operate heavy machinery, minor, women who are pregnant and/or breast feeding and those with life threatening illnesses without first consulting a doctor.

Note that the XVAPE AVANT is not a medical device and is not intended to administer medicinal or illegal substances of any kind, diagnose, cure, treat or prevent any diseases or other conditions.
 Any illegal use of this device could subject the user to severe fines, penalties and/or imprisonment under the law of their (and/or other) jurisdictions.

THIS PRODUCT DOES NOT CONTAIN ANY HERBAL MATERIAL.



OPERATION GUIDE
LOAD
 Open the magnetic cap to expose the heating chamber, pack in herbal material and close the cap. Note that the tighter the chamber is packed the more draw resistance will be experienced.
 If over-packed the XVAPE AVANT won't have good airflow.

Caution: Do not over load the device chamber with desired materials, for devices with variable temperature settings, please find the best setting that is comfortable and safe for your enjoyment.

TURN ON AND ADJUST
 To turn the vaporizer on, click the power button 3 times. When the unit is on, the LED light will indicating the battery level.

To toggle between heat settings, press and hold the power button. The LED lights will light up as temperature changes.

180°C (356°F) 190°C (374°F) 200°C (392°F) 210°C (410°F) 220°C (428°F)

OPERATE
 Once you have set device at your desire settings, waiting till the light become solid and then inhale and the device automatically begins vaping.
 To operate the vaporizer, simply draw steadily and deeply through the mouthpiece. The unit will auto shut off in 3.5 minutes when turned on. If you are done vaporizing earlier than the auto shut off, simply click the power button 3 times to turn off.

LIGHT VAPOR
 180°C (356°F)

DENSE VAPOR
 210°C (410°F)

UNLOAD
WARNING
DO NOT TOUCH THE HEATING CHAMBER IMMEDIATELY AFTER USE, PLEASE ALLOW DEVICE TO COOL DOWN.
 To unload dry herb from the XVAPE AVANT, open the magnetic cap to expose the heating chamber, clean out vaped material with pack tool and close the cap.

CHARGING
 1. To protect and extend the battery, it is recommended to charge your XVAPE AVANT at least 3 hours before initial use.
 2. When plugged in and charging, the power light will be illuminated.
 3. The led will turn off when the battery is fully charged.

Caution: Charge the battery with a good quality & dedicated charger. Never more than 5V1A. Otherwise, it will cause damage to battery, serious personal injury, fire.

After using the XVAPE AVANT or charging, please allow the device to cool down before touch and storage. It should be stored in a clean, dry place protected against the effects of weather and out of the reach of children and pets.
 If you have any concerns or if there is any problem, please switch off the XVAPE AVANT and remove it from the charger immediately. Do not try to remedy any defect yourself. Contact our customer service directly at support@topgreencig.com

CLEANING AND MAINTENANCE
 For the best performance, the XVAPE AVANT should be regularly cleaned.
 While your device is turned off and cooled down, first remove the magnetic cap. You may either use a damp cloth or cotton swab to clean the mouthpiece and heating cup. Once clean allow it to air dry or dry off with a soft cloth or towel.

WARNING
DO NOT TOUCH THE HEATING ELEMENT IMMEDIATELY AFTER USE, PLEASE ALLOW DEVICE TO COOL DOWN.
DO NOT SUBMERGE OR CLEAN WITH WATER OR ISOPROPYL ALCOHOL.

SAFETY
 Prior to your first use, please read and fully understand the instructions including the safety information. We recommend that these instructions be kept for future reference.
 Failure to follow warnings may result in a safety hazard including electric shock, fire, property damage, bodily injury or death.

AGE
 You must be of legal age in your and other jurisdiction to purchase or use the XVAPE AVANT for adult use only.

USE
 Never use the product before reviewing the manual in its entirety. If any section or topic is unclear, prior to use, please contact customer service for clarification.
 This product should not be used by children, women who are pregnant or breast feeding, or those with life threatening illnesses without first consulting a doctor. It is recommended that all users consult a doctor prior to use with your chosen herb or concentrate. Note that the XVAPE AVANT is not a medical device and is not intended to diagnose, cure, treat, prevent any diseases or other medical conditions. XVAPE AVANT is not intended to administer medicinal or illegal substances of any kind. Any illegal use of this device could subject the user to severe fines, penalties, and/or imprisonment under the laws of your and other local jurisdiction.

DAMAGE
 Immediately discontinue use of the product if the vaporizer unit is damaged in any way including but not limited to: dents, overheating, unusually restrictive airflow, and/or electrical malfunctions. Do not attempt to repair product by disassembly of non-replaceable parts except Mouthpiece, heating element, Packing Tool, Removable Battery. Please contact customer service for help with any damaged unit.

All Batteries may explode or burst into flame if used improperly or mistreated. Do not disassemble, puncture, taper, cut, crush, short-circuit, incinerate or expose to water, fire or high temperature above 60°C or 140°F. Never use damaged or improperly wrapped batteries with this device.
 It is your responsibility to understand the dangers as well as the proper procedures for handling all batteries. Do not dispose of in trash containers nor litter the environment. Please recycle or dispose according to local safety regulations law. (Suggested to cover terminals with proper insulating tape before disposal)

WARNING
THIS PRODUCT IS NOT INTENDED FOR NICOTINE.
PRODUCT IS DESIGNED FOR LEGAL HERB USE ONLY. PRODUCT DOES NOT CONTAIN ANY HERBAL MATERIALS.
KEEP DEVICE AWAY FROM CHILDREN AND PETS.

LIMITED WARRANTY
 The product is warranted for a period of one (1) year from purchase with receipt or one (1) year from date of manufacture without receipt against defects in manufacturing, workmanship, and materials. This device is designed for the use of legal concentrates only. Any use of the XVAPE AVANT with illegal substances will void the warranty.
 The warranty does not apply to damage caused by accident, abuse, misuse, natural disaster, user error, or use outside the intended use described in the manual. Use outside the intended use as described in this manual also includes any tampering with device in any way including but not limited to modification to alter functionality or modification to alter appearance.
 The warranty also does not apply to cosmetic damage including but not limited to dents, scratches/chips to finish, and/or broken plastic parts.
 Normal product wear and tear is not covered under warranty. Normal performance degradation of batteries is also not covered by the warranty.
 To make a warranty claim, please contact customer support at support@topgreencig.com. The original bill of sale, authenticity code, pictures or videos, and any serial numbers are required to redeem the warranty.

At the manufacturer's discretion, warranty service will be provided by repair of the product or exchange of the product and/or part with a new or functionally equivalent product/part.

CUSTOMER SUPPORT
 For any question or concerns with the product, it's use or defects, please contact customer support at support@topgreencig.com. We will do our best to provide a response within two (2) business days after receipt of written notice.

www.topgreen-tech.com
 © Topgreen Technology 2022